

Heavy-Duty

100–500 lb. Class

3/4" Side Clearance

Max. Drawer Width: 48"



8900 Extra Heavy-Duty Full Extension Drawer Slide

The 8900 Extra Heavy-Duty Full Extension Drawer Slide is designed to accommodate wider and heavier drawers for today's challenging applications in the commercial, residential, vehicular and educational markets.

Applications

- Wood residential, commercial and office furniture
- Architectural, laboratory and school casework
- Store fixtures and large pull outs
- Vehicular storage trays and drawers

Specifications

Model: 8900 Extra Heavy-Duty Full Extension Drawer Slide

Mounting: Side

Disconnect: Non Disconnect

Hole Pattern: Traditional

Face Frame Mounting: No

Type: Ball-Bearing

Travel: Full Extension

Finish: Zinc Plated

Length: 10", 12", 14", 16", 18", 20", 22", 24", 26", 28", 30", 32", 34", 36", 40", 42", 44", 48", 60"

Clearance: .75" + .03" - 0" on each side

Height: 3.0" [76.2mm]

Packaging: Bulk Pack (8900B): 10"–20" 4 pair per carton, 22"–28" 3 pair per carton, 30"–36" 2 pair per carton, 40"–60" 1 pair per carton

Poly Pack (8900P): 10"–20" 4 pair per carton, 22"–28" 3 pair per carton, 30"–36" 2 pair per carton

Action: Telescopic

Slide Configuration: Unhanded

Rating

Load: 10,000 Cycles:

500 lb. Load Rating - 18" Slide on a 42" Wide Drawer

400 lb. Load Rating - 24" Slide on a 42" Wide Drawer

350 lb. Load Rating - 30" Slide on a 42" Wide Drawer

200 lb. Load Rating - 60" Slide on a 48" Wide Drawer

100 lb. Flat Load Rating - 18" Slide on a 32" Wide Drawer

75,000 Cycles:

300 lb. Load Rating - 18" Slide on a 42" Wide Drawer

275 lb. Load Rating - 24" Slide on a 48" Wide Drawer

250 lb. Load Rating - 30" Slide on a 48" Wide Drawer

Max. Drawer Width: 48"

As with all Knap & Vogt drawer slides, the 8900 is designed to meet or exceed ANSI performance standards as established by BIFMA, BHMA and KCMA.

Hardware

.26" (6.6mm) holes: 1/4" or (M6 Euro) Flat, Hex or Pan Screw

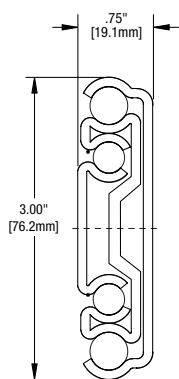
.20" (5.2mm) holes: #10 or (M5 Euro) Flat, Hex or Pan Screw

Warranty

Limited Lifetime Warranty

This slide must never be used as a pull out step, platform or any other application supporting human weight as injury may result.

Profile



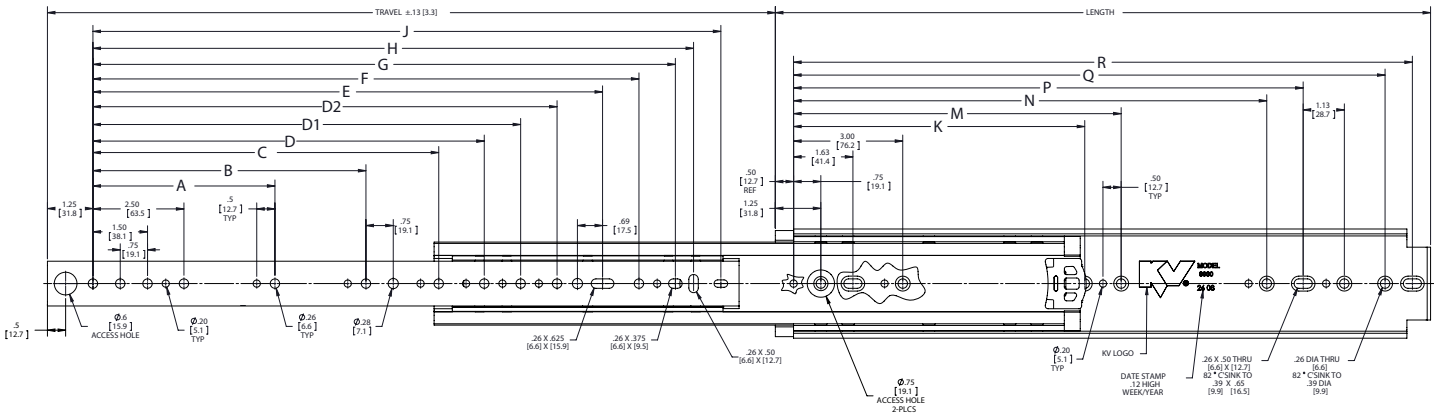
Clearance

3/4" + 1/32" - 0"

.75" + .03" - 0"

19mm + .8mm - 0mm

Charted Information



SKU Number*	Slide Size inch	Length inch	Travel inch	A inch	B inch	C inch	D inch	D1 inch	D2 inch	E inch	F inch	G inch	H inch	J inch	K inch	M inch	N inch	P inch	Q inch	S inch
8900B 10	10"	10.00"	10.00"	-	-	-	-	-	-	-	4.06"	5.06"	5.81"	6.56"	-	-	-	6.00"	8.25"	9.00"
8900B 12	12"	12.00"	12.00"	-	-	-	-	-	-	-	6.06"	7.06"	7.81"	8.56"	-	-	-	8.00"	10.25"	11.00"
8900B 14	14"	14.00"	14.00"	-	-	-	-	-	-	-	8.06"	9.06"	9.81"	10.56"	-	-	-	10.00"	12.25"	13.00"
8900B 16	16"	16.00"	16.00"	5.00"	-	-	-	-	-	-	10.06"	11.06"	11.81"	12.56"	-	-	-	12.00"	14.25"	15.00"
8900B 18	18"	18.00"	18.00"	5.00"	-	-	-	-	-	9.69"	12.06"	13.06"	13.81"	14.56"	-	-	-	14.00"	16.25"	17.00"
8900B 20	20"	20.00"	20.00"	5.00"	7.50"	-	-	-	-	11.69"	14.06"	15.06"	15.81"	16.56"	-	-	-	16.00"	18.25"	19.00"
8900B 22	22"	22.00"	22.00"	5.00"	7.50"	-	-	-	-	13.69"	16.06"	17.06"	17.81"	18.56"	-	-	-	18.00"	20.25"	21.00"
8900B 24	24"	24.00"	24.00"	5.00"	7.50"	-	-	-	-	15.69"	18.06"	19.06"	19.81"	20.56"	-	-	-	20.00"	22.25"	23.00"
8900B 26	26"	26.00"	26.00"	5.00"	7.50"	-	-	-	-	17.69"	20.06"	21.06"	21.81"	22.56"	-	-	-	22.00"	24.25"	25.00"
8900B 28	28"	28.00"	28.00"	5.00"	7.50"	-	-	-	-	19.69"	22.06"	23.06"	23.81"	24.56"	-	-	-	24.00"	26.25"	27.00"
8900B 30	30"	30.00"	30.00"	5.00"	7.50"	14.50"	-	-	-	21.69"	24.06"	25.06"	25.81"	26.56"	9.25"	-	19.75"	26.00"	28.25"	29.00"
8900B 32	32"	32.00"	32.00"	5.00"	7.50"	14.50"	-	-	-	23.69"	26.01"	27.06"	27.81"	28.56"	9.25"	15.50"	21.75"	28.00"	30.25"	31.00"
8900B 34	34"	34.00"	34.00"	5.00"	7.50"	14.50"	18.50"	-	-	25.69"	28.06"	29.06"	29.81"	30.56"	9.25"	16.50"	23.75"	30.00"	32.25"	33.00"
8900B 36	36"	36.00"	36.00"	5.00"	7.50"	14.50"	20.50"	-	-	27.69"	30.06"	31.06"	31.81"	32.56"	9.25"	17.50"	25.75"	32.00"	34.25"	35.00"
8900B 40	40"	40.00"	40.00"	5.00"	7.50"	14.50"	20.50"	-	-	31.69"	34.06"	35.06"	35.81"	36.56"	9.25"	21.50"	29.75"	36.00"	38.25"	39.00"
8900B 42	42"	42.00"	42.00"	5.00"	7.50"	14.50"	20.50"	-	-	33.69"	36.06"	37.06"	37.81"	38.56"	9.25"	21.50"	31.75"	38.00"	40.25"	41.00"
8900B 44	44"	44.00"	44.00"	5.00"	7.50"	14.50"	20.50"	-	-	35.69"	38.06"	39.06"	39.81"	40.56"	9.25"	21.50"	33.75"	40.00"	42.25"	43.00"
8900B 48	48"	48.00"	48.00"	5.00"	7.50"	14.50"	20.50"	32.50"	-	39.69"	42.06"	43.06"	43.81"	44.56"	9.25"	23.50"	37.75"	44.00"	46.25"	47.00"
8900B 60	60"	60.00"	60.00"	5.00"	7.50"	14.50"	20.50"	32.50"	45.50"	51.69"	54.06"	55.06"	55.81"	56.56"	9.25"	23.50"	37.75"	56.00"	58.25"	59.00"

*Also available in Poly Pack (eg, 8900P 10, etc.) for sizes 10"- 36"



KNAPE & VOGT

2700 Oak Industrial Dr. NE
Grand Rapids, MI 49505-6026 USA
1.800.253.1561 | 616.459.3311
Fax: 877.636.3290
www.kv.com

Knap & Vogt reserves the right to change product specifications at any time without notice and without incurring responsibility for existing units.

©2015 Knap & Vogt. KV and the KV logo are trademarks of Knap & Vogt.

OL2011/0815