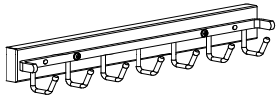
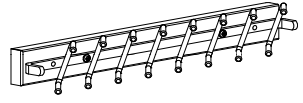

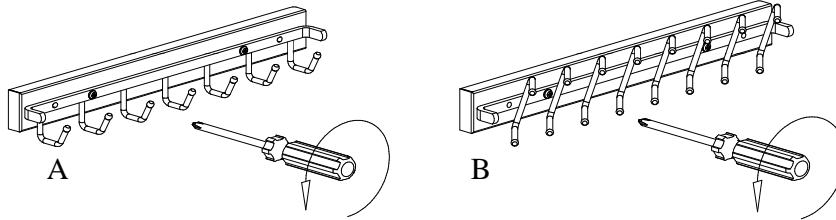


INSTALLATION INSTRUCTIONS

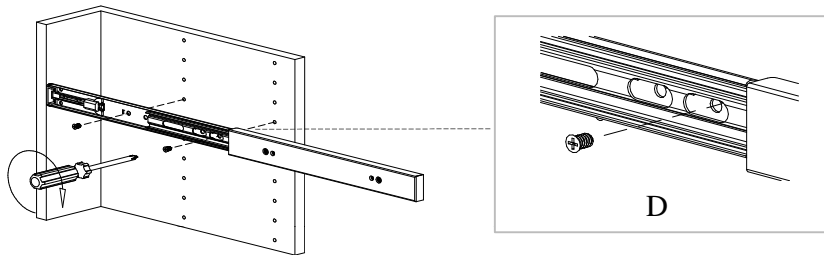
For Pop-out Belt, Tie & Scarf Rack (Right)

A*1set	B*1set	C*1set
		
Belt	Tie	

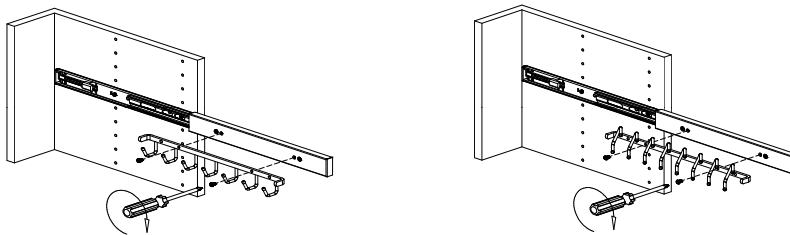
Step 1: Release 2 screws on Belt or Tie Rack.



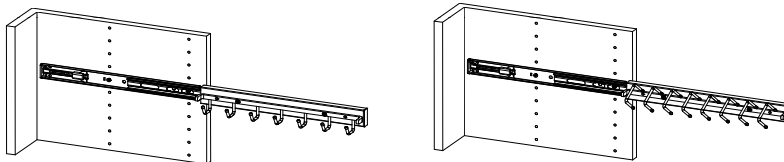
Step 2: Sliding out the housing and use 2 attached euro screws to fix slide on partition.



Step 3: To fasten the Belt or Tie Rack on housing.



Step 4: Finished



Note: Right side mount shown, Reverse for left side mount



12400 Earl Jones Way

Louisville, KY 40299

rev-a-shelf.com

Customer Service: 800-626-1126